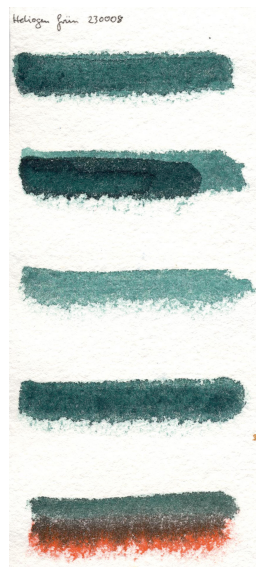


## #230008 Phthalo Green Dark, PG 7

Phthalo green dark is an intense, easily soluble green that stands exactly between the bluish and yellowish greens of the color palette. It develops its greatest luminosity on hot-pressed as well as on cotton rag paper. On handmade paper, the color appears significantly darker, and on rice paper, as expected, it is weaker. Phthalo green remains transparent even with multiple glazes applied on top of each other and develops distinctive drying edges, especially on hot-pressed paper. Both with very liquid application and with intensive saturation, the structure of the ink is very homogeneous on all papers.

On handmade paper, cotton rag paper and Chinese rice paper, the blend was produced together with #231788 Orange DPP RA (bottom ink application in each case). On hot pressed paper with #231828 Ruby DPP TR.

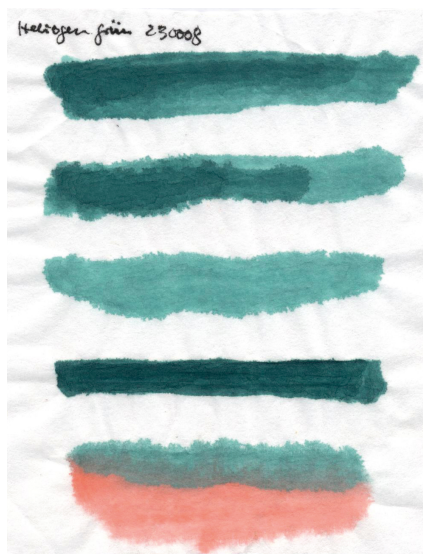
*Mould-made Paper*



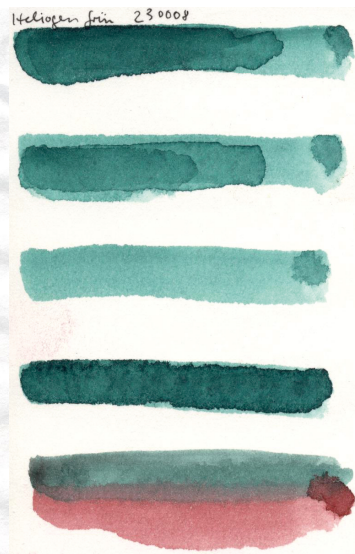
*Cotton Rag Paper*



*Chinese Rice Paper*



*Hot Pressed Paper*



## Influence and properties of painting surfaces

The "colorfulness" or character of a pigment is influenced not only by the different binders; a significant expression is also created by the different textures of the various painting surfaces.

For example, glazing pigments appear even more "transparent" on rice paper and seem to become "one" with the painting surface. On canvas, regular or hand-made paper, on the other hand, they appear more solid and stable.

### Properties of hand-made paper (German: Büttenpapier)

- Low density
- Soft, velvety
- Voluminous, full-bodied
- Firm, stable
- Absorbs a lot of water and the color penetrates deeply

### Properties of Chinese rice paper

- Dissolves with "too much" water
- Transparent (as a result, the light behind the painting surface has different effects on the paint application)
- The paint soaks through the paper and is highly runny
- practically untextured

### Properties of cotton rag paper

- "woven" paper with regular, tiny corrugation
- slightly shimmery effects
- The color seems to move
- Clear texture

### Properties of hot pressed paper

- Certain firmness and rigidity (less flexible)
- Clear lines and contours
- Smooth, dense surface
- Less absorbent, color penetrates less into the paper and runs more evenly
- Less "shadow" due to lack of texture