

26308 XSL Poppy Red

Product Information

Delivery form:	Granules
Chemical structure:	Naphthol AS red
Color Index:	Pigment Red 112, C.I. 12370

Specification

Color hue dH*:	± 0.7
Chroma dC*:	± 0.7
dE*:	≤ 1.0
dL*:	± 0.5
da*:	± 0.7
db*:	± 0.7
Tinting equivalent FAE:	100 ± 5 %

Physical Data

pH-Value:	7 – 9
Density:	1.4 g/cm ³
Bulk density (20°C)	~ 450 kg/m ³

Fastness to Weathering

Pure shade	4
Dry content:	≥ 99.0 %

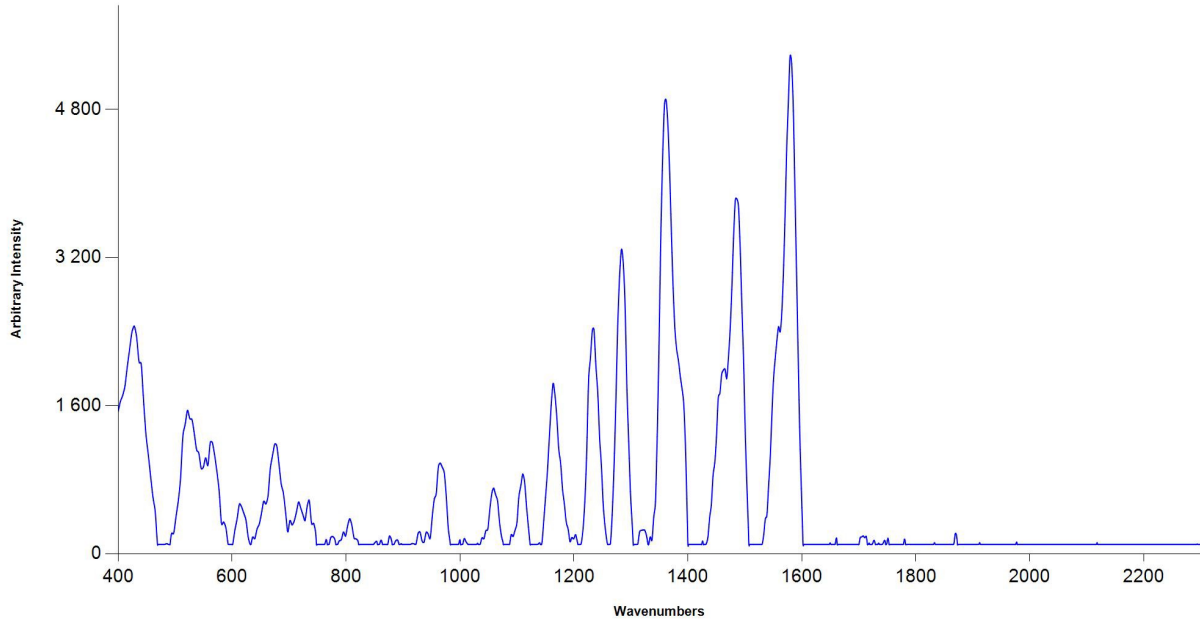
Transport and storage

Protect against weathering. Store in a dry place and avoid extreme fluctuations in temperature. Special conditions for opened packaging: Close bags after use to prevent the absorption of moisture and contamination.

Safety:

The product is not classified as dangerous under the relevant EC Directives and corresponding national regulations valid in the individual EU member states. It is not dangerous according to transport regulations. In countries outside the EU, compliance with the respective national legislation concerning the classification, packaging, labelling and transport of dangerous substances must be ensured. The information contained in the safety data sheet must be observed. This contains information on handling, product safety and ecology.

Raman spectrum of 26308:
(Source: MR PHSG, 2017)



— Sample Spectrum